



ASTRA INDUSTRIES SAL

NOTICE

ASTRA ASR 1x20 Watts LED

INSTALLATION NOTICE (English)

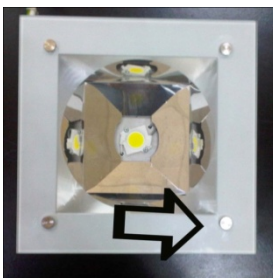
- A square opening dim 20 cm x 20 cm must be previously prepared.
- Unscrew the four screws retaining the Glass cover, and remove the cover.(Picture 1)
- Unscrew the inside screw from the inside of the fitting (picture 2) and take the four hangers up.
- Plug on the fitting to the DC current (110 to 240 Volts 50-60 htz)
- Introduce the fittings in the false ceiling and take down the four hangers (picture 3), then tie the screws (No special tools needed)
- Fix the glass cover and turn on the light.

Caution:

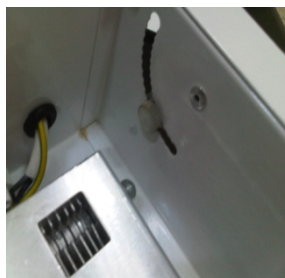
- It is imperative to plug this fitting to the earth line.
- This electronic device is intended to be installed in the false ceiling by professional only.
- Do not put on and of the current very quickly, it is an electronic device.
- Do not arc weld on the same AC line
- All maintenance operation must be made by a technician.
- Keep 2 cm space above the heat sink on the top of the fitting
- Ensure driver has not been powered for at least 1 min before connecting LED string
- Do not invert red and black wires low voltage from the driver to the diode
- Keep away the acetic acid (Acetic acid is vinegar and several glues in the market, or silicone contain this material)

Warranty

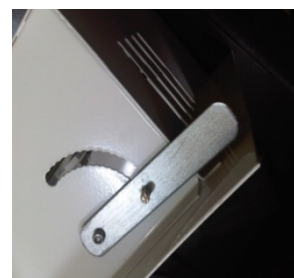
- This fitting is warranted for two years for the diode and 6 months for the Constant Current Driver.
On condition that the installation is correct.



PICTURE 1



PICTURE 2



PICTURE 3