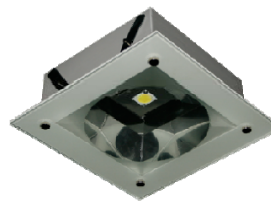




Technical data

Janvier 2011

Astra ASR 1x20 Watts



Description:

High Output Led Luminaires , this low consumption fitting is designed for intensive use in public and private spaces.

Housing:

Manufactured in enameled sheet steel , cold formed , painted with epoxy polyester powder coating electro statically applied at 180 degrees Centigrade.

Protection degree: IP 20

Color: Glossy white

Mounting:

Recessed in false ceiling. Opening 20 cm x 20 cm

LED : Characteristics

Number of light emitted diode: 1

Semiconductor : Indium Gallium

Life Span: 50 000 hours (Nominal use conditions)

Led compliance: UL listed, RoHS.

Cooling system: Double Alfa Heat Sink made with alumium sheets , surface heat transfer $S > 80 \text{ cm}^2$ per watts (European Patent Pending) this fitting is intended to be intensively used in hot and cool countries.

Ambient working temperatures: from -40 degrees up to +40 degrees.

special heat sinks are manufactured for warmer temperatures upon special request.

Working heat sink temperature: Max.60 degree C.

Working Led temperature: Max 70 degree

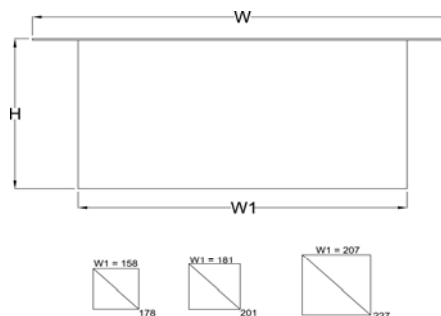
Optical Diffuser:

Bright aluminium reflector: High Grade Aluminium Reflector is integrated in the fitting to meet CAT 2 requirements and to eliminate light pollution.

Protective Glass Cover: Yes

Fitting dimensions

	Led power	L	L1	H
ASR 120	1X20W	230	181	91.5



Technical characteristics:

Nominal Power: 20 Watts

Working Power: 23 Watts

Input AC 110-240 Volts / 50-60 Hz

Constant current driver specifications: 1400 mA/16.2 Volts - IP 66 case

Luminous flux : 2000 lumens

Output light angle: 105 degree

Light color temperature : from 5000 k up to 7000 k

color rendering index: 80 %

Country of origin

LED: United states of America

Driver :Taiwan

Heat Sink: Lebanon

Compliance: CE , EN 60598

Packing:

Each fitting is packed in one carton box.

Box Dimension: 20 x 20 x 15 cm

Weight: : 3 Kg

www.astralux.com

Astra Commitment***Environmental compliance**

Astra LED products are compliant to the European Union directives on the restriction of hazardous substances in electronics equipment.

Astra will not intentionally use Led with the following restricted material: Lead, mercury, cadmium, hexavalent chromium, polybrominated biphenyls (PBB) or polybrominated diphenyl ethers (PBDE)