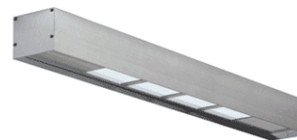




Technical Data

January 2011

Astra Multiline 5x4 Watts



Description:

Multiline compact has been specially designed for architects and interior designers to meet their requirements. Simple and aesthetic, this modular fitting can be used surface, recessed or suspended with stainless steel wires.

Body:

Made from extruded aluminium with minimum thickness 2.2mm. Surface can be brushed anodized, extruded aluminium or powder painted with epoxy polyester.(white, grey or black on request)

Mounting:

This fitting can be used suspended with stainless steel wires or surface mounted on the ceiling. For the recessed mounting a box must be prepared in the false ceiling.

LED: Characteristics

Number of light emitted diode: 5

Semiconductor component : Indium Gallium

Life Span: 50 000 hours (Normal Use Conditions)

LED compliance : UL, CE, RoHS.

Cooling System:

The aluminium body stand for the heat sink.

Ambient working temperature: From - 40 degrees up to + 40 degrees.

Special Heat Sinks are manufactured for warmer temperatures upon special request.

Working Heat Sink temperature: Max 60 ° C.

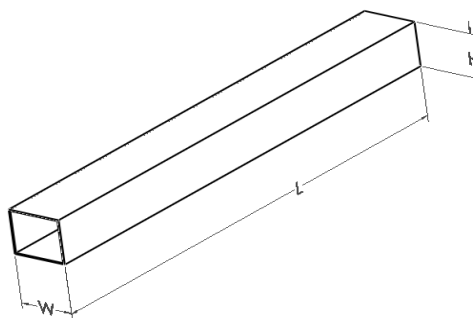
Working LED temperature : Max 70 ° C.

Optical :

White polycarbonate reflector and translucent diffuser distribute the light in a homogenous way.

Fitting dimensions

	L	W	H
ML 5x4W	100cm	11.1cm	10.1cm



Technical Characteristics:**Nominal Power: 20 watts****Working Power: 22watts****Input AC:** 200-240 volts / 50-60hz**Constant current Driver Specifications :** 700mA /9 Volts (cool white)
700mA/9.5Volts (warm white)**Luminous Flux:** 2000 lumens**Output Light angle:** 120 °**Light Color temperature:** from 2700 to 7000 degrees Kelvin**Color Rendering Index:** 80% to 98%**Original pieces:****LED:** United States of America**Driver:** Taiwan**Heat Sink:** Lebanon**Packaging:**

Each fitting is packed in one carton box.

Weight: 3 Kg.

www.astralux.com**Astra Commitment*****Environmental compliance**

Astra LED products are compliant to the European Union directives on the restriction of hazardous substances in electronics equipment.

Astra will not intentionally include in its manufacturing procedures any LED with the following restricted material :

Lead, mercury, cadmium, hexavalent chromium, polybrominated biphenyls (PBB) or polybrominated diphenyl ethers (PBDE)